

# GREECE

**CIRCUMNAVIGATING THE PELOPONNESE**

aboard *Running on Waves* • May 19–28, 2016

CRITERION  travel





## Long known as the “cradle of Western civilization,”

Greece and the Peloponnese Peninsula offer an ideal blend of history, diverse cultural legacies, stunning natural beauty, and architectural treasures. You're invited to join us as we sail warm, azure waters and explore the cities and sanctuaries of ancient Greece.

After a night at the Hotel Electra Palace at the foot of the Acropolis in Athens, an overland journey takes us across the Corinth Canal to the spectacular Temple of Apollo and Nemea, where antiquity's Nemean Games were held. Then, we board the elegant, privately chartered yacht *Running on Waves* for a seven-night cruise around the stunning, sun-drenched coast of the Peloponnese Peninsula. Treasures of antiquity await with stops at Mycenae, whose impressive ruins once concealed the reputed mask of Agamemnon; the World Heritage site of Epidaurus and its spectacular theater; Monemvasia, a medieval fortress town that clings to an enormous rock; and mountainous Mystras, home of numerous medieval churches. We will trace the origins of the Olympic Games at ancient Olympia, probe the mysteries of the Oracle at Delphi, and cruise the Corinth Canal back to Athens. Should you wish to explore Athens further, a two-night optional pre-tour extension is available.

CRITERION  
travel



## HIGHLIGHTS

**Excursions to five outstanding World Heritage sites:** Epidaurus, Mycenae, Mystras, Olympia, and Delphi.

**Transit of the Corinth Canal**, whose history extends back into classical times, including an unsuccessful attempt to build it in the 1st century AD.

**Visits to Nemea**, where in greek mythology Heracles overcame the Nemean Lion and where the ancient Nemean Games were played, **and Olympia**, birthplace of the Olympic Games.

**Seven nights aboard the intimate, state-of-the-art *Running on Waves***, a privately chartered yacht built, appointed, and staffed at the highest levels of comfort and service.





## ITINERARY

THURSDAY–FRIDAY, MAY 19–20

### HOME / ATHENS

Arrive in Athens and transfer to your hotel located in the historic Plaka District at the foot of the Acropolis. Gather this evening for a welcome orientation and reception.

HOTEL ELECTRA PALACE (R)

SATURDAY, MAY 21

### CORINTH / NEMEA / NAFPLIO (EMBARK)

History comes to life in ancient Corinth, left intact by the Romans when they redeveloped the city (once home to 100,000 citizens and 460,000 slaves) as their provincial capital in 44 BC. Among Corinth's treasures is the well-preserved Temple of Apollo and its massive Doric columns. Continue to Nemea, site of the Sanctuary of Zeus, which was developed in the 6th century BC with the establishment of the Panhellenic Nemean Games. If time allows, wander picturesque Nafplio before boarding *Running on Waves* in the harbor situated beneath the stunning Venetian Palamidi Castle.

RUNNING ON WAVES (B,L,D)

SUNDAY, MAY 22

### MYCENAE / EPIDAUROS

Ancient Mycenae was regarded as merely legend until its ruins were discovered in the 1870s by Heinrich Schliemann. Immortalized as "rich in gold" in Homer's

epic poems *The Iliad* and *The Odyssey*, Mycenae was a major center of Bronze Age civilization known for its imposing structures and gold treasures. It was here that the reputed mask of Agamemnon was unearthed in 1876. Continue to the UNESCO World Heritage site of Epidaurus, known for its Sanctuary of Asclepius, the god of medicine, and its 15,000-seat theater, an acoustic marvel built in the 4th century BC. This evening, cruise along the scenic eastern shoreline of the Peloponnese peninsula.

RUNNING ON WAVES (B,L,D)

MONDAY, MAY 23

### MONEMVASIA

The medieval fortress of Monemvasia—the "Gibraltar of Greece"—is a massive rock rising dramatically from the sea, connected to the mainland by a causeway. The only entrance to Monemvasia is through an imposing, fortified gate. Explore the narrow cobbled streets of this charming town that clings to a hillside, stealing views across the channel as you go.

RUNNING ON WAVES (B,L,D)

TUESDAY, MAY 24

### GYTHION / MYSTRAS / AREOPOLIS

From the port of Gythion drive to the ruins of medieval Mystras, a UNESCO World Heritage site perched high atop Mt. Taygetos. Beginning at the Kastro, the walled

section, observe the elaborate frescoes and decorative facades that represent the breadth of creativity in art and architecture for which Mystras is known. Enjoy a tasting of locally produced olive oil before traveling through the Mani region. Its inhabitants, known as Maniots, have for centuries remained fiercely independent. Take a walking tour of Areopolis, where the Greek War of Independence began.

RUNNING ON WAVES (B,L,D)

WEDNESDAY, MAY 25

### KALAMATA / MESSENE

Dock in Kalamata and drive north to ancient Messene, where ongoing excavations and restoration projects are under way at the expansive archaeological site. Messene's temples, stadium, theater, nymphaeum, walls, towers, and tombs reveal a legacy of a once-vibrant city. Visit the on-site museum that displays extensive finds from the works in progress. Depending on conditions, there may be swimming and/or full-sail opportunities this afternoon.

RUNNING ON WAVES (B,L,D)

THURSDAY, MAY 26

### KATAKOLON / OLYMPIA

Depart this morning for Olympia, site of the ancient Olympic Games and a vast complex that was both religious and secular. During the Games the Greek city-states were bound by a truce that forbade hostilities

and focused attention strictly on athletic competition. Every two years, the Olympic flame still begins its journey from in front of the Temple of Hera at Olympia.

RUNNING ON WAVES (B,L,D)

**FRIDAY, MAY 27**

## ITEA / DELPHI / CORINTH CANAL

Call at Itsea for an excursion to the spectacular ruins of Delphi. Located on the slopes of Mt. Parnassus, Delphi was the sanctuary of the influential Delphic Oracle and was considered by the ancient Greeks to be the center of the world. Its stunning setting and awe-inspiring architecture evoke the same reverence today as they did thousands of years ago. Return to the ship and cruise through the dramatic Corinth Canal, whose steep limestone walls soar nearly 300 feet overhead. Enjoy a farewell dinner on board as the ship returns to Athens.

RUNNING ON WAVES (B,L,D)

**SATURDAY, MAY 28**

## ATHENS (DISEMBARK) / HOME

Disembark this morning and transfer to the airport for flights home.

(B)



## OPTIONAL EXTENSION

**MAY 17–20, 2016 (PRE-TOUR)**

### ATHENS

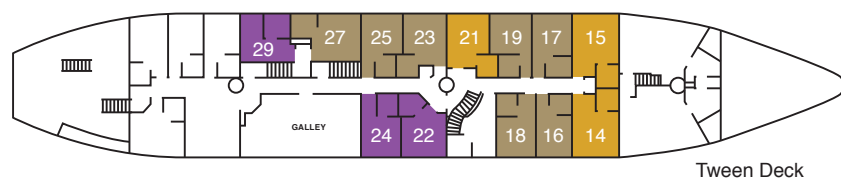
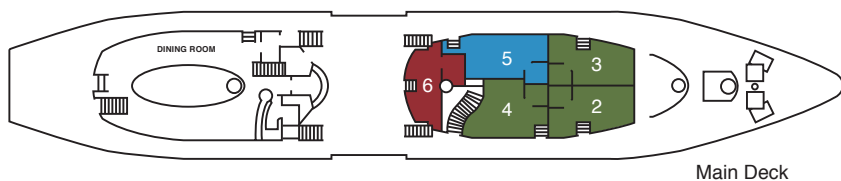
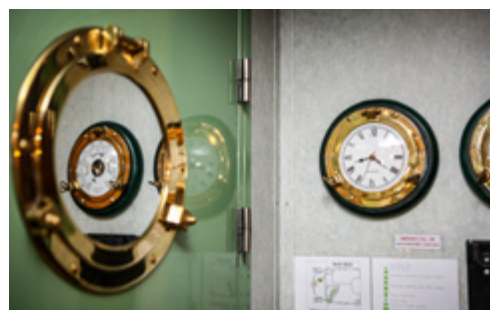
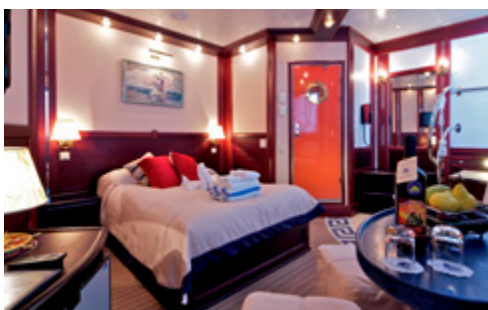
Explore the Acropolis and the beautiful new Acropolis Museum, the Agora, the National Archaeological Museum, and the Benaki Museum. Extension details and pricing will be sent to confirmed participants or upon request.





# RUNNING ON WAVES

Launched in 2011, **Running on Waves** combines the look of a classic three-masted sailing vessel with contemporary design and state-of-the-art facilities and equipment. She is modern, high-speed, and environmentally friendly, with a High Ocean Class rating that allows her to sail anywhere around the globe. All thirteen sails are deployed hydraulically from the deck by a four-man crew in a ballet-like production. The vessel meets all current SOLAS (Safety of Life at Sea) requirements for navigational and safety equipment. She boasts stabilizers, a bow thruster, a hydraulic stern marina for easy access to the sea, and a sun deck with a Jacuzzi. Much of the deck area is shaded for protection from the sun. Meals are served buffet-style in the dining room, which can accommodate all guests at one seating. In the spirit of private yachting, a full open bar is provided each day: spirits, wine, beer, soft drinks, bottled water, coffee, and tea are complimentary. Each of the ship's 18 cabins has efficient air-conditioning and heating along with private en suite facilities. The five Main Deck cabins have exterior access and relatively heavy sea doors for safety. Single, double, and triple accommodations are available.



## Program Rates Include

All accommodations and meals as specified in the itinerary • All excursions as specified in the itinerary • Full program of briefings, lectures, and presentations • Group transfers for all participants on group arrival and departure days • Baggage handling • Gratuities to porters, waitstaff, guides, and drivers • Gratuities to shipboard personnel • Entrance fees • Welcome and farewell receptions • Full open bar on board *Running on Waves*—wine, beer, alcoholic beverages, bottled water, soft drinks, coffee, and tea • Bottled water on motorcoaches • Professional tour manager throughout

## PROGRAM RATES (per person)

CATEGORY	DOUBLE	SINGLE
<b>C</b> 129 SQ. FT., TWO PORTHOLES, UPPER AND LOWER TWIN BEDS, SHOWER	\$6,995	\$11,895
<b>B</b> 118 SQ. FT., TWO PORTHOLES, DOUBLE BED OR TWO LOWER TWIN BEDS, SHOWER (CABIN 22 HAS TWO LOWER TWIN BEDS AND ONE UPPER TWIN BED)	\$8,495	\$14,445
<b>A</b> 129 SQ. FT., TWO PORTHOLES, DOUBLE BED OR TWO LOWER TWIN BEDS AND ONE UPPER TWIN BED, SHOWER	\$8,995	—
<b>Premium 2</b> 151 SQ. FT., TWO LARGE WINDOWS, 1 SKYLIGHT, DOUBLE BED, SEATING AREA, SHOWER	\$10,995	—
<b>Premium 1</b> 172–194 SQ. FT., ONE OR TWO LARGE WINDOWS, TWO SKYLIGHTS, DOUBLE BED, SEATING AREA, SHOWER	\$11,495	—
<b>Owner's Suite</b> 215 SQ. FT., TWO LARGE WINDOWS, TWO SKYLIGHTS, DOUBLE BED, SEATING AREA WITH LARGE SOFA (CAN ACCOMMODATE A THIRD PERSON), SHOWER	\$12,495	—

Triple rates for third person in cabin: category B: \$5,495; category A: \$5,995; Owner's Suite: \$7,995

Double beds measure 71"x51" to 73"x53" and twin beds measure 71"x31.5"



To reserve a place on **Greece: Circumnavigating the Peloponnese** please complete and return this form with your deposit of \$1,000 per person, payable to Criterion Travel. Mail to: 145 Forest Ave. Palo Alto, CA 94301. For more information or to reserve by phone, please call (888) 328-2089 or (650) 328-2089, or email [res@critteriontravel.com](mailto:res@critteriontravel.com)

## GENERAL INFORMATION

### PROGRAM RATES DO NOT INCLUDE

U.S. domestic and international airfare • Passport/visa expenses • Medical expenses and immunizations • Travel insurance • Optional excursions or deviations from the scheduled tour • Private or independent transfers between the airport and hotel/ship other than arranged group transfers • Excess baggage charges • Meals not specified in the itinerary; dishes and beverages not part of the included meals • Laundry or dry cleaning • Telephone, email, and fax charges • Room service • Other items of a personal nature

### AIRFARE

U.S. domestic and international airfare is not included in the program rates. Information about making flight arrangements will be sent to all participants.

### WHAT TO EXPECT

This is a moderately strenuous program that is at times physically demanding and busy. Daily activities can involve one to three miles of walking, often on hilly and/or uneven terrain. On the ship, beds measure slightly smaller than typical twins and doubles. Moving around on board requires opening relatively heavy sea doors and climbing or descending relatively

steep stairways (with sturdy hand rails). Participants should be fit and in active good health. Any physical or mental condition that may require special medical attention must be reported in writing when you make your reservation. Temperatures during this time of year generally range from the mid-50s to the mid-70s F, with moderate humidity on the coast.

### GROUP SIZE

The maximum number of participants on this program is 26 (up to 30 if triples are utilized) including travelers from the Santa Barbara Museum of Art, Cornell Adult University, and Dartmouth College.

### INSURANCE

Travel insurance for trip cancellation and interruption, medical problems, baggage loss and delay, etc., is highly recommended, and we hope that you will obtain it for this expedition. Trip cancellation policies that apply to this expedition are included in this brochure. Please be sure to carry the details of your travel insurance coverage with you on the program. Travelers are free to purchase the travel insurance of their choice. It is recommended that travelers clearly understand the difference between "primary" and "secondary" travel insurance.

## TERMS & CONDITIONS

### RESERVATIONS AND DEPOSITS

To reserve space, please complete the reservation form and mail it with your check or credit card information to the address at the top of the form. You may also fax the form to (650) 560-6400 and your reservation will be held for five working days pending receipt of your check or credit card information. If you have questions, please call (888) 328-2089 or email [res@critteriontravel.com](mailto:res@critteriontravel.com). Final payment deadline is January 20, 2016, 120 days prior to departure.

### CANCELLATIONS AND REFUNDS

Upon payment of a \$1,000 deposit per person, all reservations are subject to the cancellation provisions set forth below and by which the passenger agrees to be bound. Cancellations shall not be effective until they are received in writing and confirmed by Criterion Travel. Deposits are refundable (less a \$250 per person administration fee) if written notice of cancellation is received within 30 days of reservation; after that, deposits are 100% nonrefundable. Final payment is due January 20, 2016 (120 days prior to departure). Cancellations within 120 days of departure are 100% nonrefundable. For this reason we strongly urge participants to purchase trip cancellation insurance. If the program is cancelled by Criterion Travel, you will receive a full refund, without further obligation on our part. No refunds will be made for any part of this program on which you choose not to participate. Note:

Criterion Travel does not accept liability for any airline cancellation penalty incurred by the purchase of a nonrefundable ticket in conjunction with this tour.

### ITINERARY CHANGES

The itinerary presented for this tour is subject to modification and change by Criterion Travel. Every reasonable effort will be made to operate the program as planned; however, should unforeseen world events and conditions require the itinerary to be altered, Criterion Travel reserves the right to do so for the safety and best interest of the group. Any extra expenses incurred in this situation are the responsibility of the participant.

### RESERVATION CONTACT

(888) 328-2089 or  
[res@critteriontravel.com](mailto:res@critteriontravel.com)

California Seller of Travel Program  
CST #2088800-40

### PHOTO CREDITS:

(From Dreamstime.com): Delphi, Greece © Christian Delbert; Monemvasia, Greece © Costas1962; Monemvasia © Mira Im; Historic Buildings on Square © Imagin.gr Photography; Traditional Greek Salad © Liliya Kandashevich; Poseidon © Maksym Dragunov; Corinth © Prostogugs (From Shutterstock.com): Apollo Temple in Corinth © Nick K.; Corinth Canal © David H. Seymour; Epidauros Amphitheater, Greece © dr. Le Thanh Hung

NAME #1 (as on passport)	BIRTHDATE
NAME #2 (as on passport)	BIRTHDATE
STREET ADDRESS	
CITY / STATE / ZIP / POSTAL CODE	
HOME PHONE	WORK PHONE
E-MAIL(s)	

## PAYMENT

☐ Enclosed is my check for \$ \_\_\_\_\_ (\$1,000 per person), to reserve \_\_\_\_\_ place(s) on **Greece: Circumnavigating the Peloponnese**  
OR ☐ Charge the deposit to my credit card (circle one):

VISA      MC      AMEX      Diners Club      Discover

NAME ON CREDIT CARD		
CARD #	EXP. DATE	SECURITY CODE
SIGNATURE AS IT APPEARS ON CREDIT CARD		DATE

## CATEGORY PREFERENCE

1st Choice \_\_\_\_\_ 2nd Choice \_\_\_\_\_  
Bed Preference (not guaranteed): ☐ One bed ☐ Two beds

## SINGLE TRAVELERS

☐ I prefer to have single accommodations.  
OR ☐ I plan to share accommodations with:

OR ☐ I'd like to know about roommates.  
I am a ☐ Non-smoker ☐ Smoker.

*I understand that if a roommate cannot be found by the final payment deadline of January 20, 2016, I will pay the single rate.*

☐ I/We have read the Terms & Conditions section of this brochure and understand and agree with them as stated herein.

SIGNATURE	DATE
SIGNATURE	DATE